



Wellbeing for Learning



Catherine McAuley
Catholic College

MEDOWIE

At Catherine McAuley Catholic College, we put people first.

Everything flows from this.



Catherine McAuley
Catholic College

MEDOWIE

Welcome to myARC

myARC is our Wellbeing for Learning Framework that seeks to fulfil our Moral Imperative of empowering *Agile, Reflective and Confident* learners.

myARC provides students with the opportunity to deeply and profoundly engage in learning as they are encouraged to bring their own experiences and life knowledge to the learning process.

Every student has a story to tell. A child's experiences, innate abilities and dispositions, along with their aspirations inform their story – their own personal arc.



Catherine McAuley
Catholic College
MEDOWIE

OUR MORAL IMPERATIVE

*Empower a Mercy inspired community of
confident, agile, reflective learners.*

OUR MISSION

*Co-create learning environments where
faith, purpose, fulfilment and joy are
*experienced by all.**

Objectives

The aim of our Wellbeing for Learning Framework is for each member of the Catherine McAuley Catholic College community to be equipped with the skills and tools they need to be able to thrive in a dynamic, globally connected world.

Our community members will be:

Agile in their thinking, and approach to challenge.

Reflective individuals who continually grow as people and as learners.

Confident in themselves, their talents and skills.

People of **purpose**, who approach work and life with a strong sense of direction.

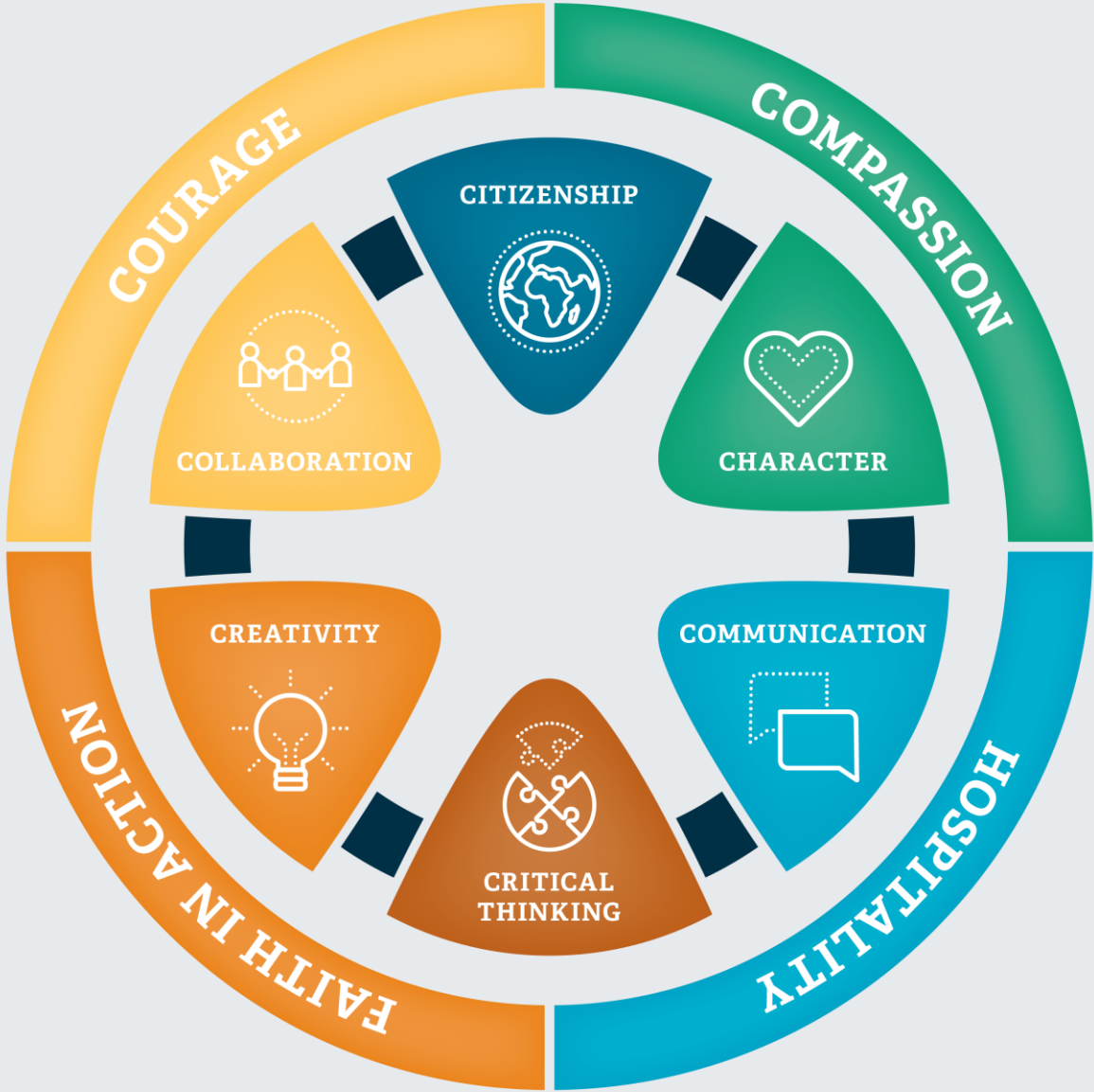
Joyful people who share their light with others.

People who live their **faith** through their actions

People who find **fulfilment** in their relationships and work



College Values and Learning Competencies



A Strong Foundation

Underpinning our wellbeing practices is our common language of our six global competencies of **Character, Citizenship, Creativity, Critical Thinking, Collaboration** and **Communication**, supported by our College values of **Courage, Compassion, Hospitality** and **Faith in Action**.

A focus on the 6Cs immunises and protects against social and emotional difficulties thus building positive mental health and resourcefulness. Learning and wellbeing are intertwined, one supporting the other ensuring that CMCC students are “good at learning and good at life.”



“When students fully engage with the 6Cs... students have a profound and deeper opportunity to engage in learning because they are able to bring their experiences and life knowledge, rather than being labelled as not having what we need them to know”

- **Jean Clinton** (Dive into Deep Learning)

True North

A NEW DIRECTION IN WELLBEING FOR LEARNING



Our college seeks to assist our students in finding their own true north by honouring the uniqueness of each child, supporting them in discovering their own strengths and pathways, to fully engage with life and be equipped for a journey of engaging careers.

“We all have our true north, we just need the right supports, resources and guidance systems to get us there.”

Lyn Sharratt

FINDING TRUE NORTH THROUGH STUDENT VOICE, CHOICE & AGENCY

Teaching & learning should be joyful!

Autonomy increases intrinsic motivation and leads to authentic engagement.

Purposeful choices which are flexible and target individual learning needs, passions, interests & strengths allow for deeper, richer learning experiences.

Students who feel a genuine sense of agency in their learning see relevance in what they are doing. Learning is more joyful and has greater purpose and meaning, with students better able to learn and practice social and emotional skills.

Autonomy = Voice, Choice & Agency, all playing a key role in developing wellbeing skills which result in a number of benefits for young people.



It takes a village to raise a child

STRUCTURES, ROUTINES & PEOPLE
THAT SUPPORT OUR STUDENTS

We are here to help

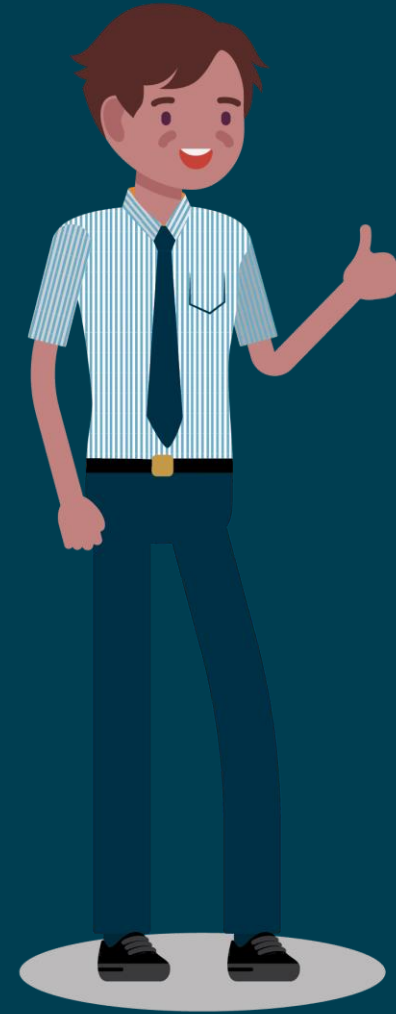
Caring for our young people is a community responsibility. We all play a role in ensuring that our young are safe, cared for and surrounded by conditions and environments that allow them to thrive.

Parents and carers are a child's primary educators and care givers. Assisting families are our school educators, both teaching and support staff, who take an active interest in their students and work with them to explore passions, interests and pursue future aspirations. Central to this process is the trusted and professional relationships that our staff will build with their students as they walk the school journey together.

In addition to the staff of the College, our students will have access to a variety of additional supports. The McAuley Centre Learning Support Team assist students in their learning and they will also have access to a College Psychologist and Chaplain.

It takes a village to raise a child. Some young people's villages will be bigger than others and include medical professionals, psychologists, social workers and other allied health professionals. The College's role is to meet the needs of the child, and work with their support team to ensure they grow as confident, agile and reflective learners.

A shared responsibility for quality learning



Our Ways of Working

At CMCC, there are norms of behaviour for members of the community that support wellbeing for learning and bring life to our Moral Imperative, Mission & Values.

Our community members are expected to:

- Be optimistic and hope-filled in their approach to life and learning.
- Be prepared for each learning session – resources are ready, device is charged and in good condition.
- Be here now – we are present to each other.
- Presume positive intentions: This is my best thinking at this time – my ideas can change as I learn and grow.
- Be hard on ideas and soft on people. Challenge and critique the idea, be kind to the person.
- Demonstrate mutual respect for everyone's perspective, pace and journey.
- Assess their own work, reflect on their learning, know where they are at and identify the next step in the learning journey.



Our House Structure

Our House structure is the foundation of learning and wellbeing. They are places of belonging, a 'school within a school', a student's home.

Our unique House structure offer students:

Welcoming and safe space. Our Houses will be alive with a culture of hospitality and welcome.

Authentic meaningful relationships. Comradery is forged between all House members, establishing quality relationships.

Student engagement and leadership. Student-led, focused and centred activities allow freedom and the opportunity for young people to demonstrate their growing maturity and take leadership of their Houses.





Wati Discovery House

YEAR 7 & YEAR 8



Wati Discovery House learners give life to and inspire our shared Mercy Values of hospitality, courage, compassion and faith in action. Learners will be challenged to take pride in the creation and presentation of high-quality work emerging from our six Deep Learning Global Competencies, while developing the non-negotiable skills of literacy and numeracy and social and emotional wellbeing.

Learners will be presented with complex questions, design thinking activities and authentic problems relevant in the real world. They will apply their skills and knowledge to approach problems in creative, joy-filled and collaborative ways.

As students grow in confidence and refine the skill of reflection, they are challenged with the gradual transference of responsibility for their own learning. The ultimate aspiration of Wati Discovery House is to have students develop a deeper understanding of themselves and their faith, along with their purpose as a learner.



Watha Endeavour House

YEAR 9 & YEAR 10



Our young people are challenged to deepen their understanding of their passions and talents, sharpening their focus on their future pathways. They have beyond campus opportunities and engagement with subject matter experts to further pursue passions and deepen learning.

They experience greater flexibility in their learning choices, tailoring a course program meeting their needs and interests. Watha Endeavour House students are called to approach life with a self-assured, creative, entrepreneurial mindset.

Our young people are challenged to be active global citizens who make a positive difference through personal contribution to and stewardship of the community.

These young people meet with Learning Advisors to review their progress and set directions and pathways that align with their future aspirations.

Watha Endeavour House citizens are people of honourable character who humbly seek growth through prayerful, considered reflection and collaboration.



Bathu Horizons House

YEAR 11 & YEAR 12



Bathu Horizons House young adults work towards optimising their post school opportunities by deeply engaging with their carefully constructed program of study. Students are courageous and assessment ready with a strong foundation for personal success in either academic and/or vocational pathways.

Our young adults deepen their understanding of their faith through engaging in the College retreat and formation experiences. They have a compassionate and hospitable approach to their community influenced by a Catholic worldview.

Bathu Horizons graduates are life and career ready, departing the College as empowered, confident, agile and reflective citizens who thrive in a globally connected, dynamic world.

Our Tailored Learning Program

Core + is the College's tailored learning program which provides students with choice, agency and ownership throughout their learning journey, giving them permission to explore and develop their strengths, passions and interests.

Core + seeks to not only cover the core curriculum mandated by educational authorities but also provide an opportunity for students to deeply engage with courses that align with their passions and set their future direction.

Our college provides unique offerings throughout each House stage to help extend and broaden each young person's outlook, whilst strengthening their passions for learning and developing their skills and capabilities for a rapidly changing world.

You can learn more about *Core +* at our College website.



Meet a College Learning Advisor



Meet Daniel Lupin, he is a classroom teacher and Learning Advisor at the College. Each timetable cycle he meets with students and monitors their academic progress, gets to know the students' passions and strengths and understands their future aspirations. He has consulted with the students and their parents and has helped advise them on their course selections.

Through the Learning Advisor sessions, Mr. Lupin will keep checking in on his students and continue to assist them along the way.



Polaris Program

beyond what you thought was possible

Polaris Program

Polaris. Noun: the North Star used for centuries to navigate a path through uncharted territory to find one's direction.

Students who are hungry for additional challenge and demonstrate a passion, however this presents itself, may be eligible for the Polaris Program. The Polaris Program aims to enable the flexibility for students to be engaged in learning that has meaning and purpose, irrespective of a student's Year level. The passionate physicists in Year 8 might find themselves in the Year 11 Physics lab or the young entrepreneur who may establish and run a college-based business.

Regardless of age or stage, the Polaris Program aims to support students to follow their passions and find their direction.



Polaris Program

beyond what you thought was possible



Catherine McAuley
Catholic College

MEDOWIE

Home of the
McAuley Eagles

Become Part of a Team

An essential element of wellbeing is belonging and comradery with others. CMCC offers students the opportunity to discover and follow their passions with like-minded and talented peers.

Whatever their interests, CMCC is committed to working with each child to explore, develop and celebrate the talents and passions of our students. Creative, academic, technical or sporting CMCC is here to embrace, nurture and co-create experiences to allow our students to thrive.

Students have the opportunity to represent the College in a variety of pursuits, under the unifying identity of the McAuley Eagles. Eagles are native to the Port Stephens region and have been adopted as the symbol of our representative teams. Strong, graceful, agile and intelligent eagles embody the McAuley team spirit.

**UNITED
IN MERCY**

Catherine McAuley Catholic College, we put people first.

Everything flows from this.

Each person has a story to tell.

Together, we are committed to co-creating learning environments where faith, purpose, fulfilment and joy are experienced by all.

We invite you to join us.



Catherine McAuley
Catholic College
MEDOWIE

